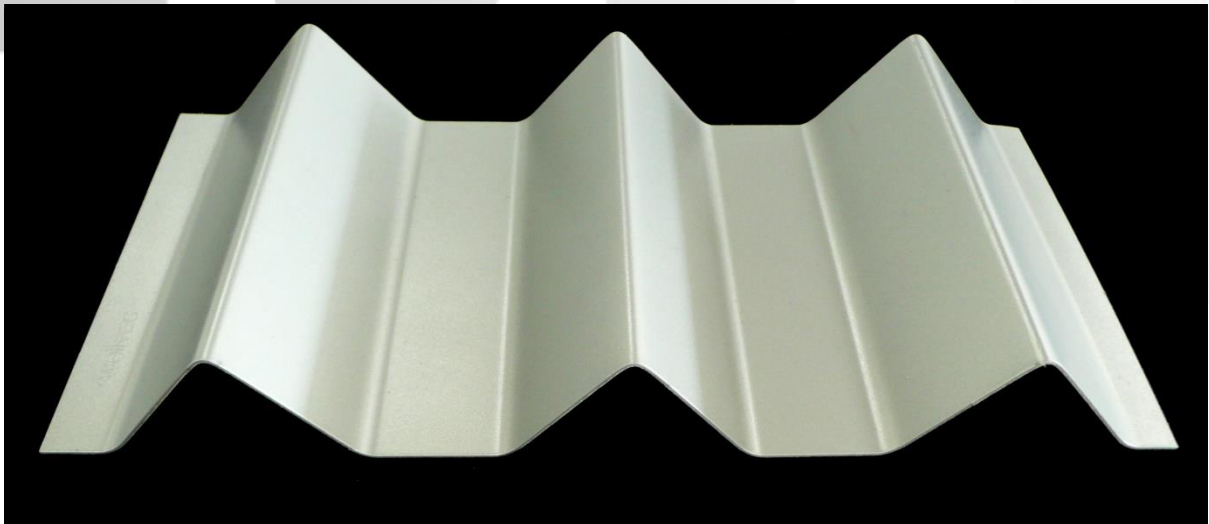


CADISCH



WELLTEC

SZ – 30/60



Type: SZ – 30/60
Material: Stainless Steel, Mild Steel, Aluminium
Thickness: 0.8mm, 1mm
Maximum Height: 5.5m
Finishes: Anodised (Aluminium), Powder coated, Xerotec

(Spacing can be customized, ask for more details).

Metal for Design and Architecture www.cadischmda.com
Cadisch MDA Ltd. Unit 2 The IO Centre, Hearle Way, Hatfield, Hertfordshire, AL10 9EW
T: 020 8492 7622 - F: 020 8492 0333 - M: mda@cadisch.com
Registered No: 5130261 - VAT Registration No: GB 849 1444 211