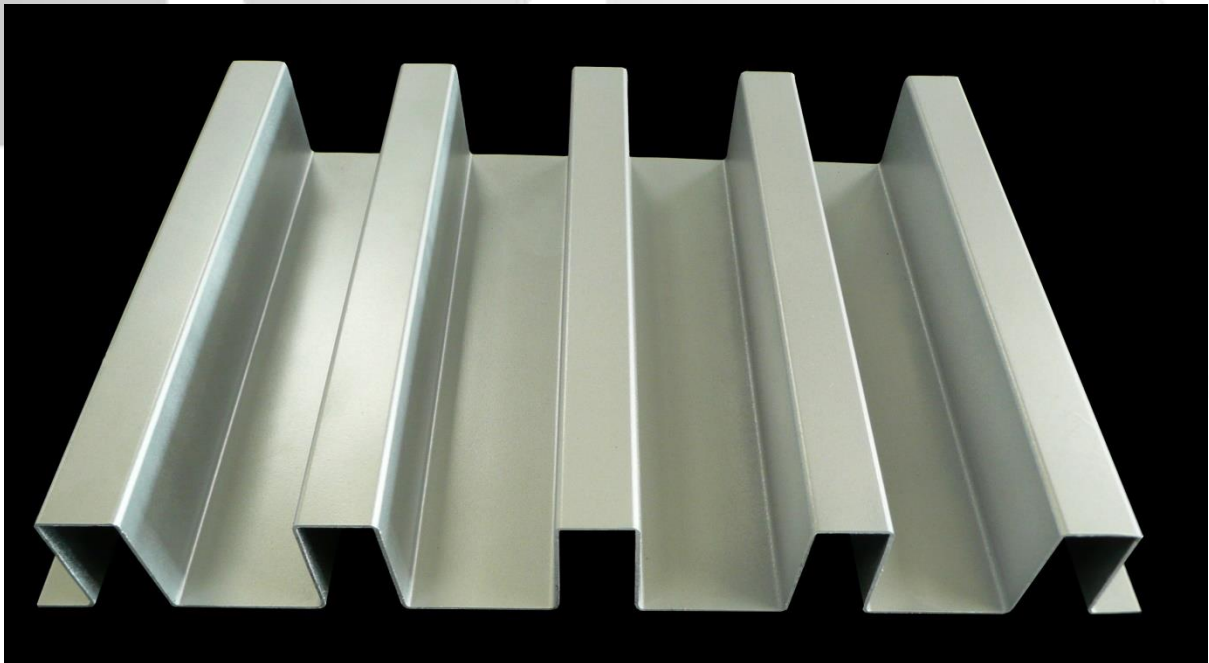


CADISCH



WELLTEC

SQ - 40/20



Type: SQ – 40/20
Material: Stainless Steel, Mild Steel, Aluminium
Thickness: 0.8mm, 1mm
Maximum Height: 3m
Finishes: Anodised (Aluminium), Powder coated, Xerotec

Metal for Design and Architecture www.cadischmda.com
Cadisch MDA Ltd. Unit 2 The IO Centre, Hearle Way, Hatfield, Hertfordshire, AL10 9EW
T: 020 8492 7622 - F: 020 8492 0333 - M: mda@cadisch.com
Registered No: 5130261 - VAT Registration No: GB 849 1444 211