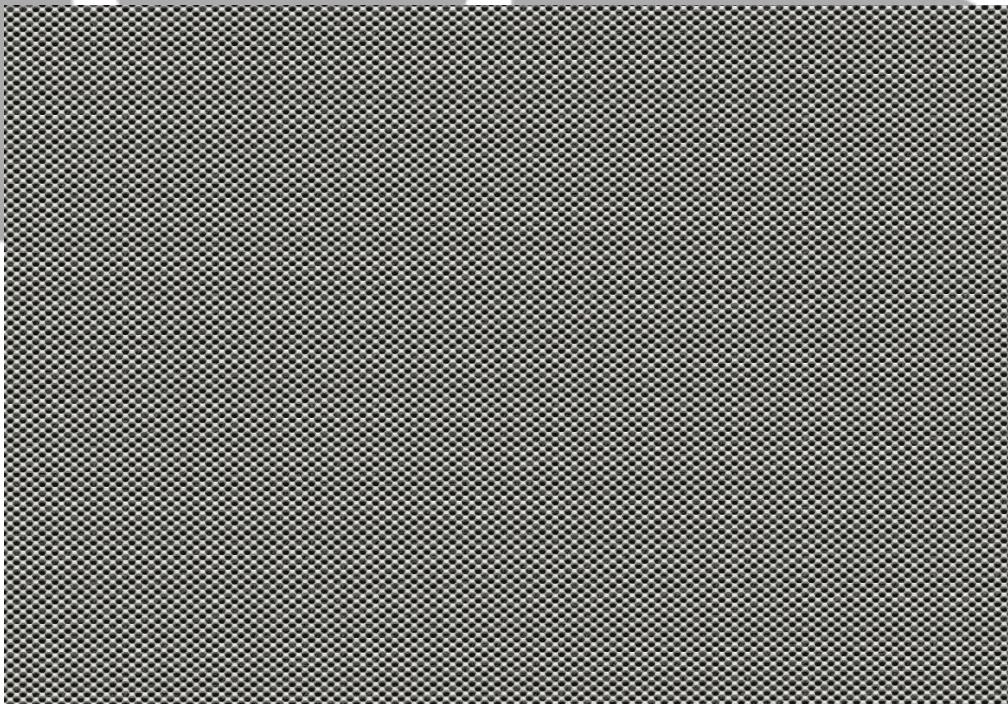


CADISCH



MESHTEC

TAU 10



| | |
|--------------------------|--|
| Type: | Meshtec Tau 10 |
| Mesh: | ST 6 x 1.3 |
| Material: | Aluminium / Pre Galvanised Mild Steel |
| Thickness: | 0.8mm / 1mm |
| Max Sizes: | LWM 1000 – 1250mm |
| Visual Open Area: | 42% |
| Finishes: | Anodised (Aluminium), Powder coated, Xerotec |

Metal for Design and Architecture

www.cadischmda.com

Cadisch MDA, Unit 2 The IO Centre, Hearle Way, Hatfield, Hertfordshire,
AL10 9EW T: 020 8492 0444 - M: mda@cadisch.com