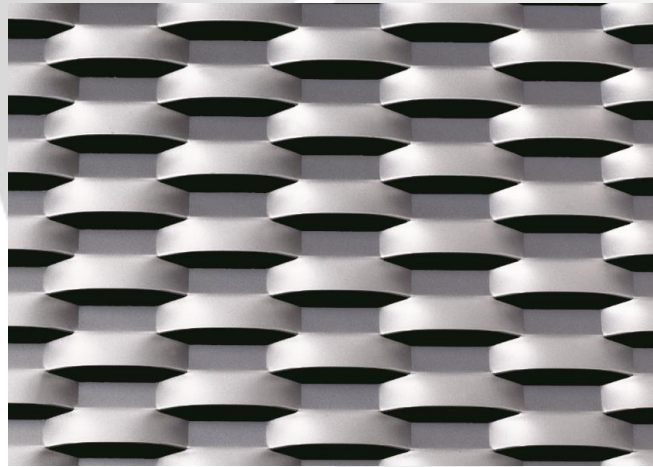


CADISCH



 **MESH**TEC

**Esperia**



<b>Type:</b>	Meshtec Esperia
<b>Mesh:</b>	100mm (LWM) x 40mm (SWM)
<b>Material:</b>	Aluminium / Pre Galvanised Mild Steel
<b>Thickness:</b>	1.5mm / 2mm
<b>Material Thickness:</b>	1mm – 2mm
<b>Max Sizes:</b>	LW 1000 – 1500 x SW 3000mm LW 2000 – 2500 x SW 1700mm
<b>Visual Open Area:</b>	23.3%
<b>Air Flow Open Area:</b>	59%
<b>Finishes:</b>	Anodised (Aluminium), Powder coated, Xerotec