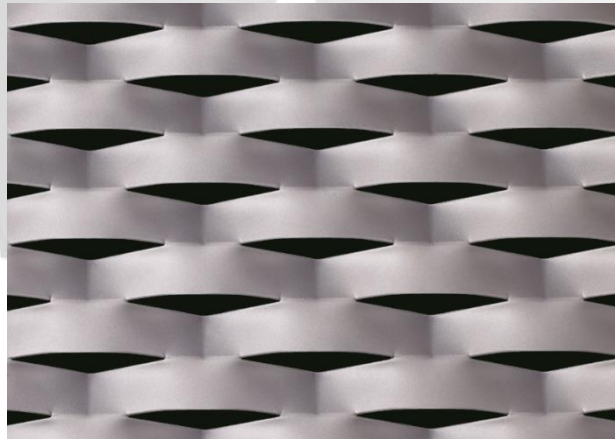


CADISCH



 **MESHTEC**

Ambasciata



Type:	Meshtec Ambasciata
Mesh:	110mm (LWM) x 52mm (SWM)
Material:	Aluminium / Pre Galvanised Mild Steel
Material Thickness:	1.5mm – 3mm
Thickness:	1.5mm / 2mm / 3mm
Max Sizes:	LW 1000 – 1500 x SW 3000mm LW 2000 – 2500 x SW 1600mm
Visual Open Area:	16%
Air Flow Open Area:	56%
Finishes:	Anodised (Aluminium), Powder coated, Xerotec
NBS	H31 Metal Profiled/ Flat Sheet Cladding/ Covering