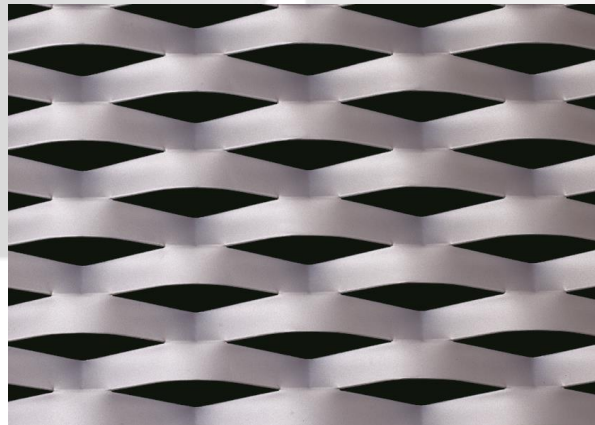


CADISCH



 MESHTEC

Academy



Type:	Meshtec Academy
Mesh:	115mm (LWM) x 40mm (SWM)
Material:	Aluminium / Pre Galvanised Mild Steel
Thickness:	1.5mm / 2mm / 3mm
Material Thickness:	1.5mm – 3mm
Max Sizes:	LW 1000 – 1500 x SW 3000mm LW 2000 – 2500 x SW 1800mm
Visual Open Area:	26%
Air Flow Open Area:	60%
Finishes:	Anodised (Aluminium), Powder coated, Xerotec