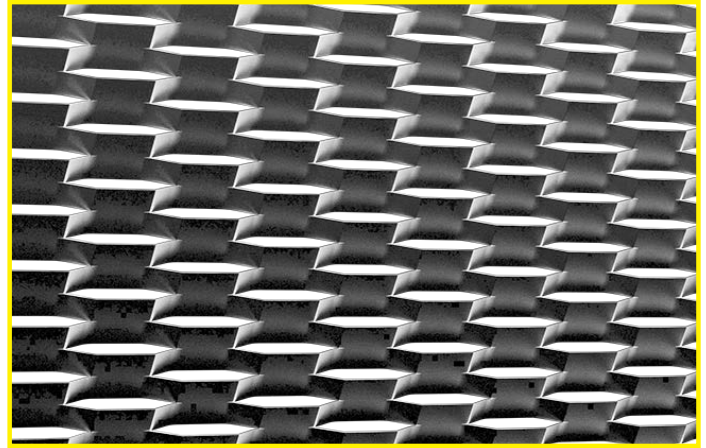




MESHTEC Omega

Meshtec® expanded metal is one of the most versatile products in the Cadisch MDA range, offering durable transparency with high airflow and easy installation. With a wide range of materials and finishes and ongoing R&D, we continue to extend the range of expanded metal mesh products with an ever increasing spectrum of new and innovative wide band products for metal cladding, and lighter meshes for screening and ceilings.

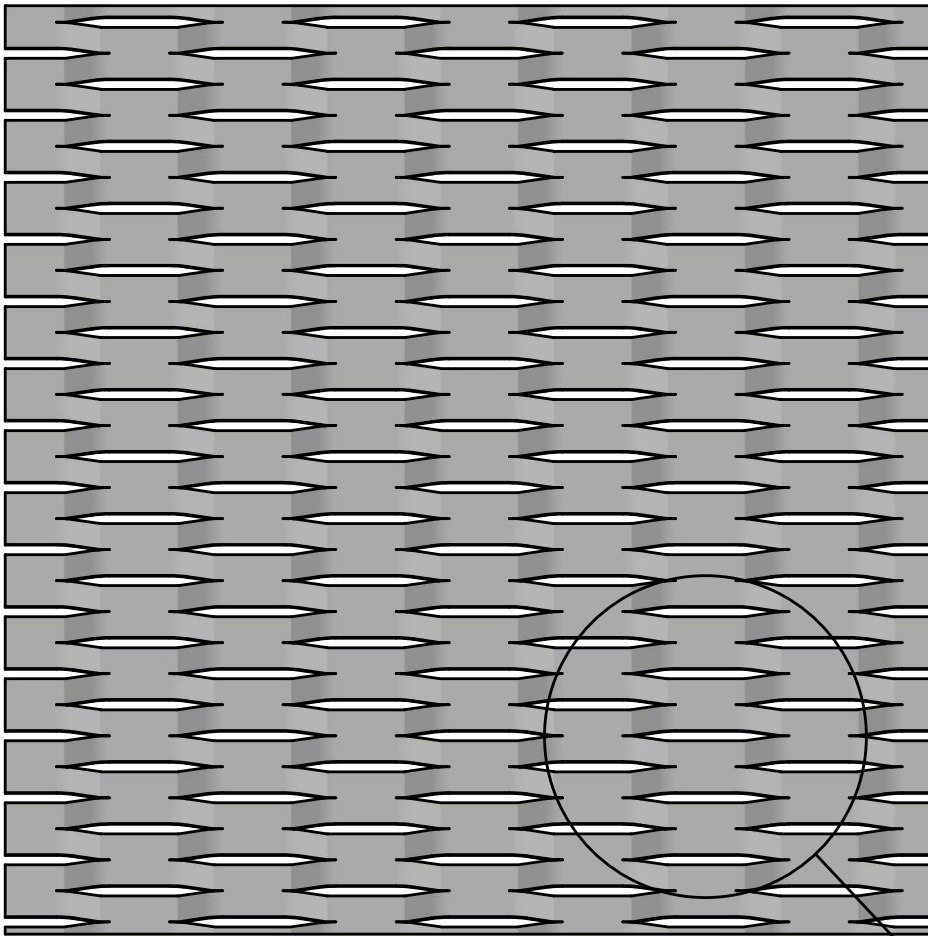


PROPERTIES:

Type:	Meshtec Omega
Mesh:	160mm (LWM) x 40mm (SWM)
Strand:	24mm
Material:	Aluminium / Pre Galvanised Mild Steel
Material Thickness:	1.5mm / 2mm / 3mm
Max Sizes:	1000x2000, 1250x2500, 1500x3000, 2000x1600 Max, 2500x1600 Max
Finishes:	Anodised (Aluminium), Powder coated, Specialist PPC
NBS:	N/A
Visual Open Area:	15%
Weight (kg/m ² *):	Aluminium: 1.5mm: 3.6, 2mm: 4.8, 3mm: 7.2 Mild Steel: 1.5mm: 10.8, 2mm: 14.4, 3mm: 21.6

SUGGESTED APPLICATIONS:

DIMENSIONS:



LWM = Long Way Mesh (mm)
 SWM = Short Way Mesh (mm)
 SW = Strand Width (mm)
 GH = Grid Height (mm)

