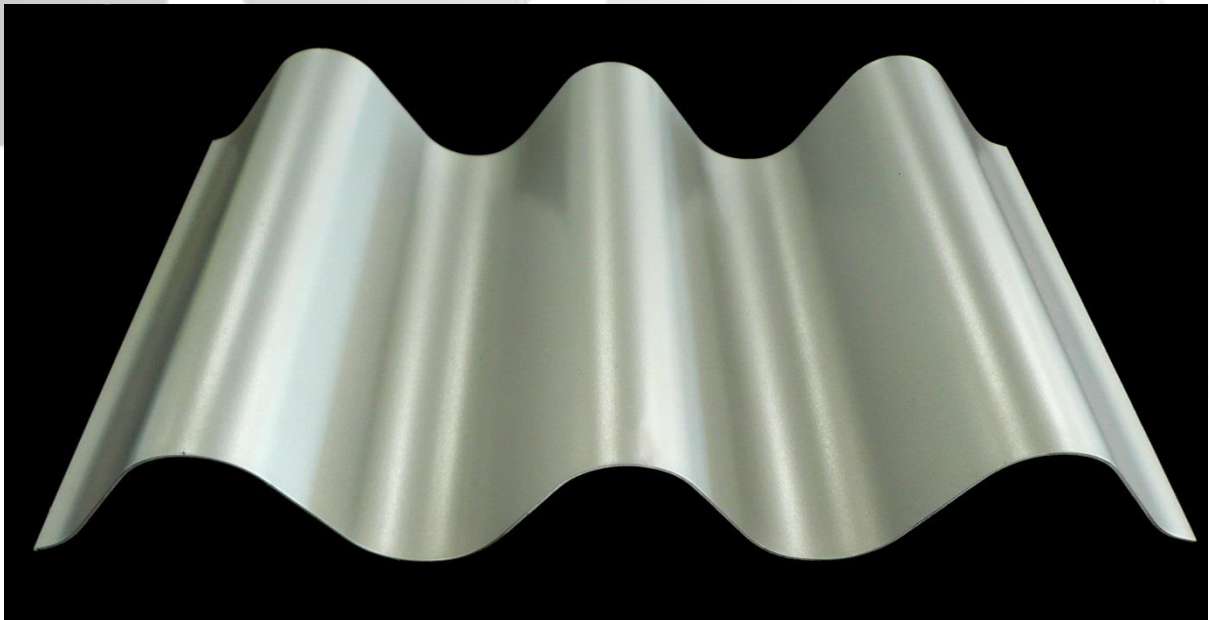


CADISCH



 WELLTEC

W-48/100



Type:	WellTEC W-48/100
Material:	Stainless Steel, Mild Steel, Aluminium
Thickness:	0.8mm, 1mm, 1.5mm
Maximum Height:	5.5m
Finishes:	Anodised (Aluminium), Powder coated, Xerotec

Metal for Design and Architecture www.cadischmda.com
Cadisch MDA Ltd. Unit 2 The IO Centre, Hearle Way, Hatfield, Hertfordshire, AL10 9EW
T: 020 8492 7622 - F: 020 8492 0333 - M: mda@cadisch.com
Registered No: 5130261 - VAT Registration No: GB 849 1444 211