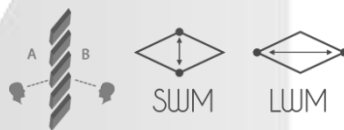
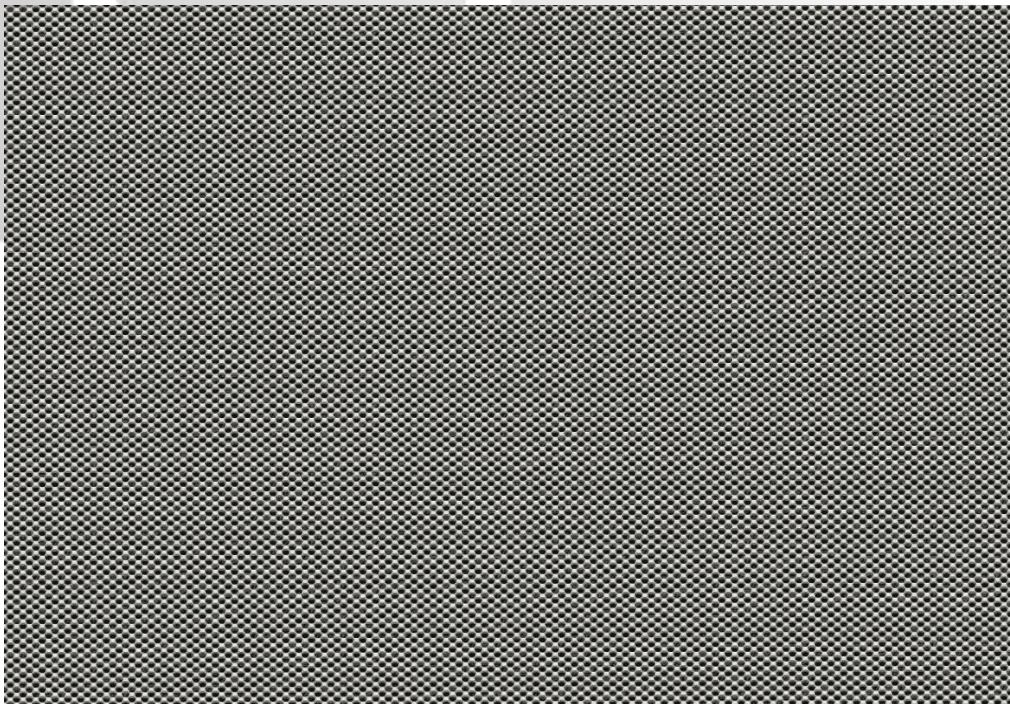


CADISCH



 MESHTEC

TAU 10



Type:	Meshtec Tau 10
Mesh:	ST 6 x 1.3
Material:	Aluminium / Pre Galvanised Mild Steel
Thickness:	0.8mm / 1mm
Max Sizes:	LWM 1000 – 1250mm
Visual Open Area:	42%
Finishes:	Anodised (Aluminium), Powder coated, Xerotec

Metal for Design and Architecture www.cadischmda.com
Cadisch MDA Ltd. Unit 2 The IO Centre, Hearle Way, Hatfield, Hertfordshire, AL10 9EW
T: 020 8492 7622 - F: 020 8492 0333 - M: mda@cadisch.com
Registered No: 5130261 - VAT Registration No: GB 849 1444 211