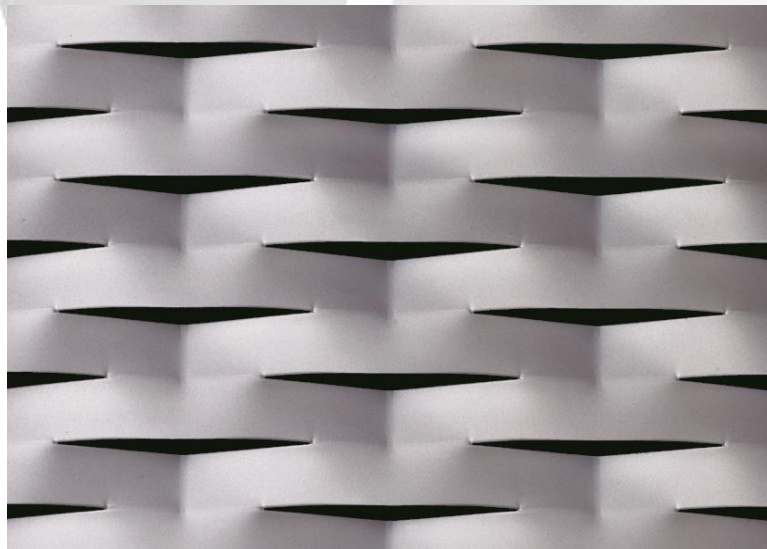


CADISCH

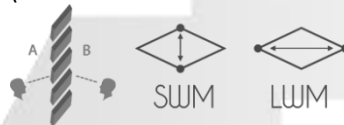


 MESHTEC

Sierra



(Please note: this is not to scale)



Type:	Meshtec Sierra
Mesh:	160mm (LWM) x 52mm (SWM)
Material:	Aluminium / Pre Galvanised Mild Steel
Thickness:	1.5mm / 2mm
Max Sizes:	LW 1000 – 1500 x SW 3000mm LW 2000 – 2500 x SW 1600mm
Visual Open Area:	10.2%
Air Flow Open Area:	25%
Finishes:	Anodised (Aluminium), Powder coated, Xerotec

Metal for Design and Architecture www.cadischmda.com
Cadisch MDA Ltd. Unit 2 The IO Centre, Hearle Way, Hatfield, Hertfordshire, AL10 9EW
T: 020 8492 7622 - F: 020 8492 0333 - M: mda@cadisch.com
Registered No: 5130261 - VAT Registration No: GB 849 1444 211