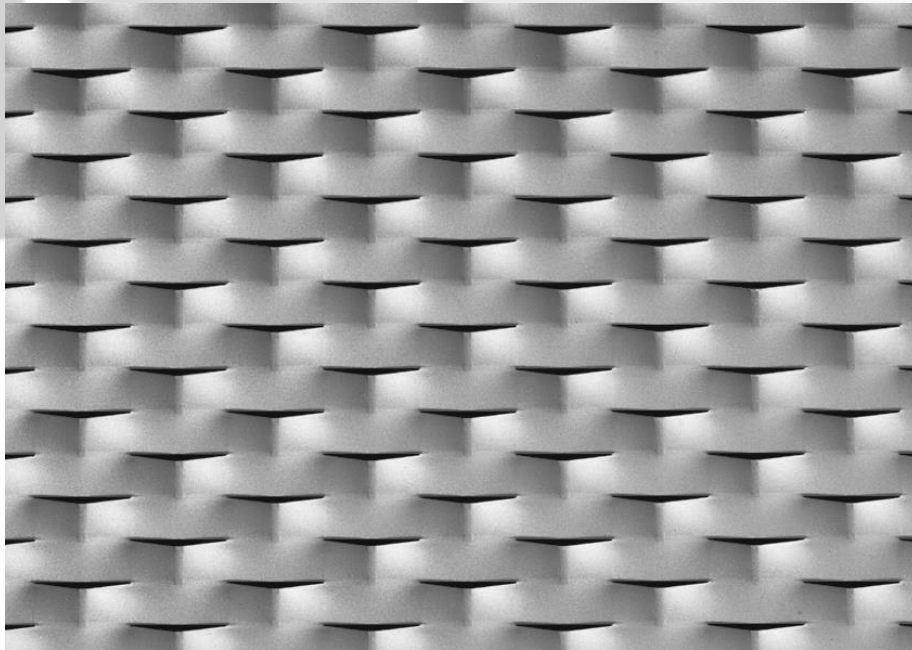


CADISCH

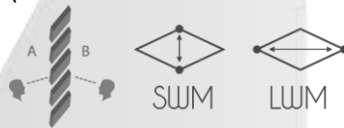


 MESHTEC

**Privacy**



(Please note: this is not to scale)



<b>Type:</b>	Meshtec Privacy
<b>Mesh:</b>	62.5mm (LWM) x 28mm (SWM)
<b>Material:</b>	Aluminium / Pre Galvanised Mild Steel
<b>Thickness:</b>	1.5mm / 2mm
<b>Max Width:</b>	LW 1000 – 1500 x SW 3000mm LW 2000 – 2500 x SW 1500mm
<b>Visual Open Area:</b>	5.3%
<b>Air Flow Open Area:</b>	14%
<b>Finishes:</b>	Anodised (Aluminium), Powder coated, Xerotec

Metal for Design and Architecture [www.cadischmda.com](http://www.cadischmda.com)  
Cadisch MDA Ltd. Unit 2 The IO Centre, Hearle Way, Hatfield, Hertfordshire, AL10 9EW  
T: 020 8492 7622 - F: 020 8492 0333 - M: [mda@cadisch.com](mailto:mda@cadisch.com)  
Registered No: 5130261 - VAT Registration No: GB 849 1444 211