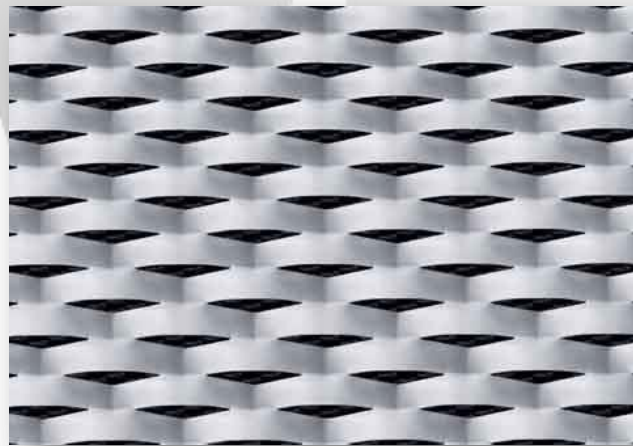


CADISCH



 MESHTEC

Italy 400



(Please note: this is not to scale)



|                   |  |
|-------------------|--|
| <b>Type:</b>      | Meshtec Italy 400                                      |
| <b>Mesh:</b>      | 400mm (LWM) x 140mm (SWM)                              |
| <b>Material:</b>  | Aluminium / Pre Galvanised Mild Steel                  |
| <b>Thickness:</b> | 3mm / 5mm  |
| <b>Max Sizes:</b> | LW 1000 – 1250 x SW 2500mm                             |
| <b>Finishes:</b>  | Anodised (Aluminium), Powder coated,<br>Xerotec        |
| <b>NBS:</b>       | H31 Metal Profiled / Flat Sheet Cladding<br>/ Covering |

Metal for Design and Architecture [www.cadischmda.com](http://www.cadischmda.com)  
Cadisch MDA Ltd. Unit 2 The IO Centre, Hearle Way, Hatfield, Hertfordshire, AL10 9EW  
T: 020 8492 7622 - F: 020 8492 0333 - M: [mda@cadisch.com](mailto:mda@cadisch.com)  
Registered No: 5130261 - VAT Registration No: GB 849 1444 211