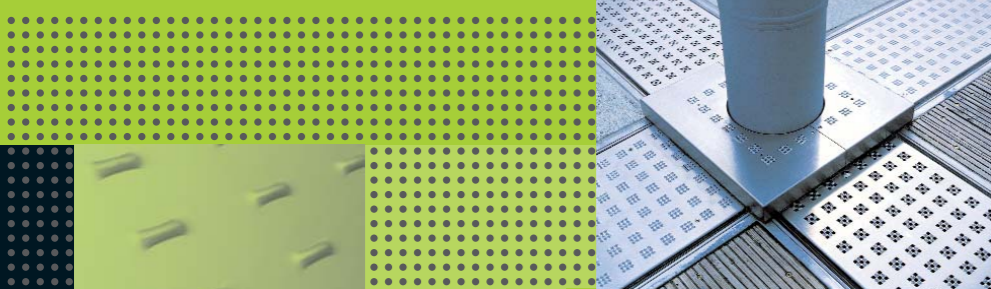


Plantec®

Solid Plate Patterned Panels

Coltec®

Modular Column Cladding System



Introduction

Plantec® and Coltec® offer a range of metal finishing solutions, from simple wall and surface covering to the improvement of unsightly columns.

Plantec®

The Plantec® range offers a wide selection of patterned and embossed sheets. Most of the patterns shown in this section are examples and in many instances we are able to modify stud centres, pitches and spacings to create more individual designs. In addition sheets can be sheared to size and can also incorporate laser cut shapes and patterns.

Plantec is the registered trademark of Metallwarenfabrik Neustadt GmbH



Product Properties

We are able to offer the following fabrication options to our Plantec® range:

- Folding, lipping and forming
- Rolling and bowing
- Framing
- Fixing holes

Specialist Panels

In most cases we can shear or laser cut sheets to your requirements; this includes cutting special holes and shapes.

We are also able to offer the panels folded into trays for applications such as cladding panels. Please contact our Technical Department for further information on all specialist fabrications.

NB. Minimum order quantities may apply to certain products in this section.

N01

Square Stud Straight

Most of the patterns shown within this section are examples and in many instances we are able to modify stud centres, pitches and spacing to create bespoke designs.

Stud Separation:	50mm (from centres)
Stud Diameter:	25mm square
Material Thickness:	1, 1.2, 1.5, 2mm
Standard Sheet Sizes:	2 x 1, 2 x 1.25m

Special sizes available upon request.

Materials:	Aluminium Stainless Steel Mild Steel Yellow Metals
Finishes:	Polished Polyester Powder Coated Poly Vinyl Coated Mill Anodised

N02

Square Stud Straight

Stud Separation:	80mm (from centres)
Stud Diameter:	40mm square
Material Thickness:	1, 1.2, 1.5, 2mm
Standard Sheet Sizes:	2 x 1, 2 x 1.25m

Special sizes available upon request.

Materials:	Aluminium Stainless Steel Mild Steel Yellow Metals
Finishes:	Polished Polyester Powder Coated Poly Vinyl Coated Mill Anodised

N05

'Squeeze' Aluminium Sheet

Stud Separation:	80 x 40mm (from centres)
Studs:	35 x 12mm
Material Thickness:	1, 1.5, 2mm
Standard Sheet Size:	2.5 x 1.25m

Special sizes available upon request.

Materials:	Aluminium Stainless Steel Mild Steel Yellow Metals
Finishes:	Polished Polyester Powder Coated Poly Vinyl Coated Mill Anodised

N06

Close Squares

Stud Separation:	8mm (from centres)
Studs:	6mm
Material Thickness:	0.8, 1mm
Standard Sheet Size:	2 x 1m

Special sizes available upon request.

Materials:	Aluminium Stainless Steel
Finishes:	Polished Polyester Powder Coated Poly Vinyl Coated Mill Anodised

Specialist Panels

In most cases we are able to shear or laser cut panels to your requirements; this includes cutting special holes and shapes. Please contact our technical department for further information on all specialist fabrications.



N09

Anodised Propellor Relief

Most of the patterns shown within this section are examples and in many instances we are able to modify stud centres, pitches and spacing to create bespoke designs.

Relief Dimensions: 28 x 8.5mm
Material Thickness: 1.6/2.8mm
Standard Sheet Size: 2.5 x 1.25m

Special sizes available upon request.

Materials: Aluminium
Stainless Steel
Finishes: Polished
Polyester Powder Coated
Poly Vinyl Coated
Mill
Anodised



N10

Pyramid Stud Straight Perforated

Stud Separation: 60mm (from centres)
Studs: 28mm
Material Thickness: 1, 1.2, 1.5mm
Standard Sheet Sizes: 2 x 1, 2.5 x 1.25, 3 x 1.5m

Special sizes available upon request.

Materials: Aluminium
Stainless Steel
Mild Steel
Yellow Metals
Finishes: Polished
Polyester Powder Coated
Poly Vinyl Coated
Mill
Anodised



N11

Round Stud Offset

Stud Separation: 75mm T Pitch (from centres)
Studs: 12mm
Material Thickness: 1, 1.2, 1.5mm
Standard Sheet Sizes: 2 x 1, 2.5 x 1.25, 3 x 1.5m

Special sizes available upon request.

Materials: Aluminium
Stainless Steel
Mild Steel
Yellow Metals
Finishes: Polished
Polyester Powder Coated
Poly Vinyl Coated
Mill
Anodised



N12

Round Stud Straight (with plateau)

Stud Separation: 50mm (from centres)
Studs: 15mm
Material Thickness: 1, 1.2, 1.5mm
Standard Sheet Sizes: 2 x 1, 2.5 x 1.25m

Special sizes available upon request.

Materials: Aluminium
Stainless Steel
Mild Steel
Yellow Metals
Finishes: Polished
Polyester Powder Coated
Poly Vinyl Coated
Mill
Anodised

Specialist Panels
In most cases we are able to shear or laser cut panels to your requirements; this includes cutting special holes and shapes. Please contact our technical department for further information on all specialist fabrications.



N13

Pyramid Stud Straight

Stud Separation: 60mm (from centres)
Studs: 28mm
Material Thickness: 1, 1.2, 1.5mm
Standard Sheet Sizes: 2 x 1, 2.5 x 1.25, 3 x 1.5m

Special sizes available upon request.

Materials: Aluminium
 Stainless Steel
 Mild Steel
 Yellow Metals

Finishes: Polished
 Polyester Powder Coated
 Poly Vinyl Coated
 Mill
 Anodised



N14

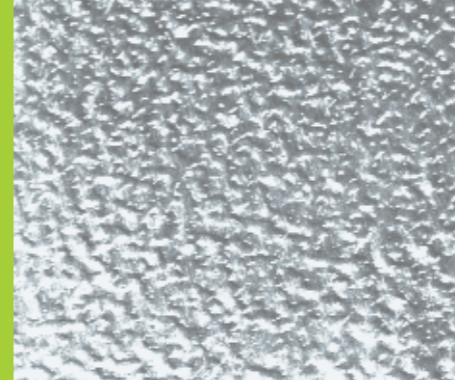
Round Stud Straight

Stud Separation: 50mm (from centres)
Studs: 7mm
Material Thickness: 1, 1.2, 1.5, 2mm
Standard Sheet Sizes: 2 x 1, 2.5 x 1.25m

Special sizes available upon request.

Materials: Aluminium
 Stainless Steel
 Mild Steel
 Yellow Metals

Finishes: Polished
 Polyester Powder Coated
 Poly Vinyl Coated
 Mill
 Anodised



Stucco

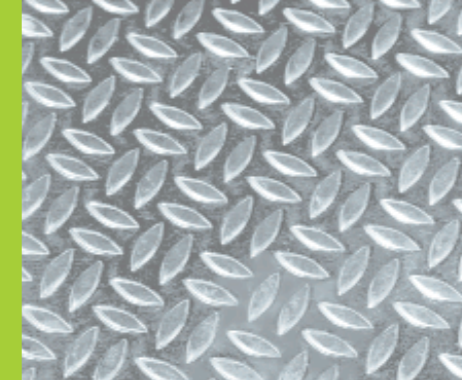
Stucco Relief

Material Thickness: 0.8mm
Standard Sheet Size: 2 x 1m

Special sizes available upon request.

Materials: Aluminium
 Stainless Steel
 Mild Steel
 Yellow Metals

Finishes: Polished
 Polyester Powder Coated
 Poly Vinyl Coated
 Mill
 Anodised



Rice

Rice Grain Relief

Relief Dimensions: 6 x 3mm
Material Thickness: 1.5 – 2mm
Standard Sheet Size: 2.5 x 1.25m

Special sizes available upon request.

Materials: Aluminium
 Stainless Steel
 Mild Steel
 Yellow Metals

Finishes: Polished
 Polyester Powder Coated
 Poly Vinyl Coated
 Mill
 Anodised

Specialist Panels
 In most cases we are able to shear or laser cut panels to your requirements; this includes cutting special holes and shapes. Please contact our technical department for further information on all specialist fabrications.

Coltec® Introduction

Coltec® is a modular column cladding system which is both versatile in size and shape with single column lengths up to 7000mm long. Coltec® columns can be fabricated with laser cut shapes and perforations for special features such as concealed lighting and audio applications. Coltec® is not limited to columns but can also be easily adapted for use as wall and corner cladding.

Coltec is a registered trademark of Metallwarenfabrik Neustadt GmbH

Product Properties

We offer a variety of finishes and materials:

- Polyester Powder Coated
- Nylon Coated
- Polished
- Stainless Steel
- Mild Steel
- Aluminium

Alternative Uses

Apart from the classical use of Coltec® as a column casing it can also be adapted for use as wall and corner claddings. We are also able to produce perforations, slots or grooves within the column as a feature for lighting or speaker grilles.

Column Diameters

Min: 120mm

Max: According to specification

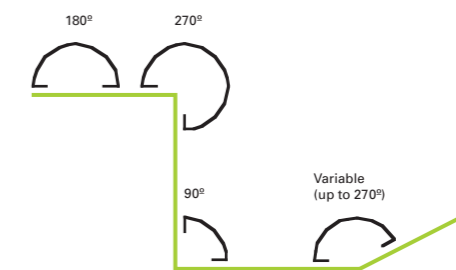
Material Thicknesses

Aluminium: 0.8 – 5mm

Mild Steel: 0.8 – 3mm

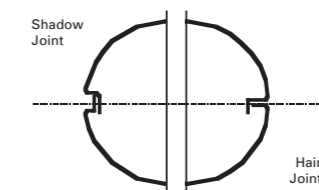
Stainless Steel: 0.8 – 3mm

Variants



Joint Designs

Coltec® offers two joint profiles for the designers' requirements.



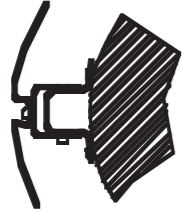
Mounting

Shadow Joint



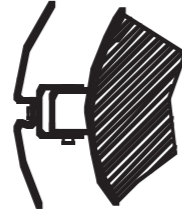
Bolted Directly

D = Column without casing + 40mm



With U-profile, bolted

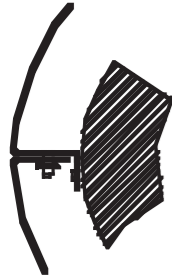
D = Column without casing + 140mm



With U-profile, clamped

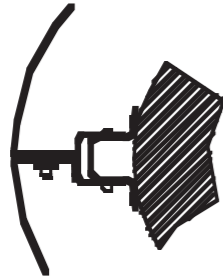
D = Column without casing + 140mm

Hair Joint



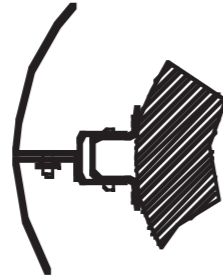
Bolted Directly

D = Column without casing + 120mm



With U-profile, bolted

D = Column without casing + 220mm



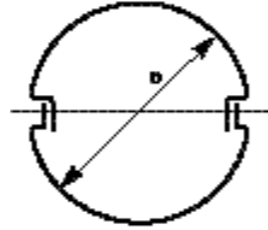
With U-profile, clamped

D = Column without casing + 220mm

Group R

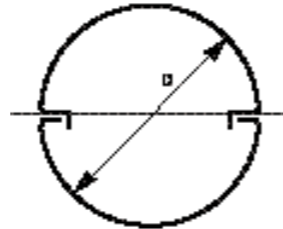
RK-S Circle

Shadow Joint



RK-H Circle

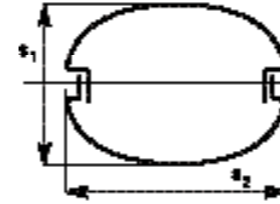
Hair Joint



Group E

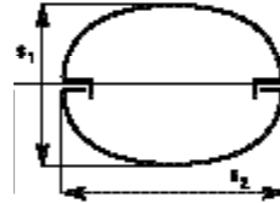
RE-S Ellipse

Shadow Joint



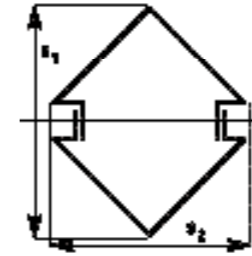
RE-H Ellipse

Hair Joint



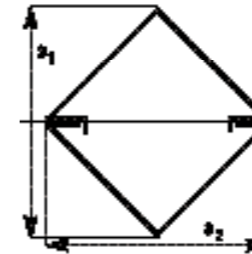
ED-S Triangle

Shadow Joint



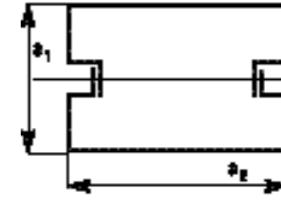
ED-H Triangle

Hair Joint



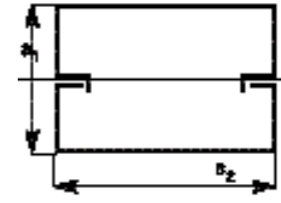
ER-S Rectangle

Shadow Joint



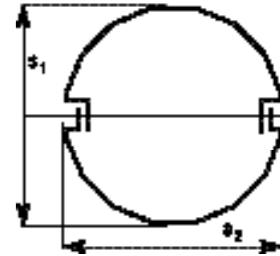
ER-H Rectangle

Hair Joint



EP-S Polygon

Shadow Joint



EP-H Polygon

Hair Joint

